

## FAQ\_How to adjust ICA-HM350 focus.



### \*\*\* FW & Utility version List:

ICA-HM350: v.5.0.2.4196

**Step1.** Turn off your ICA-HM350 power.

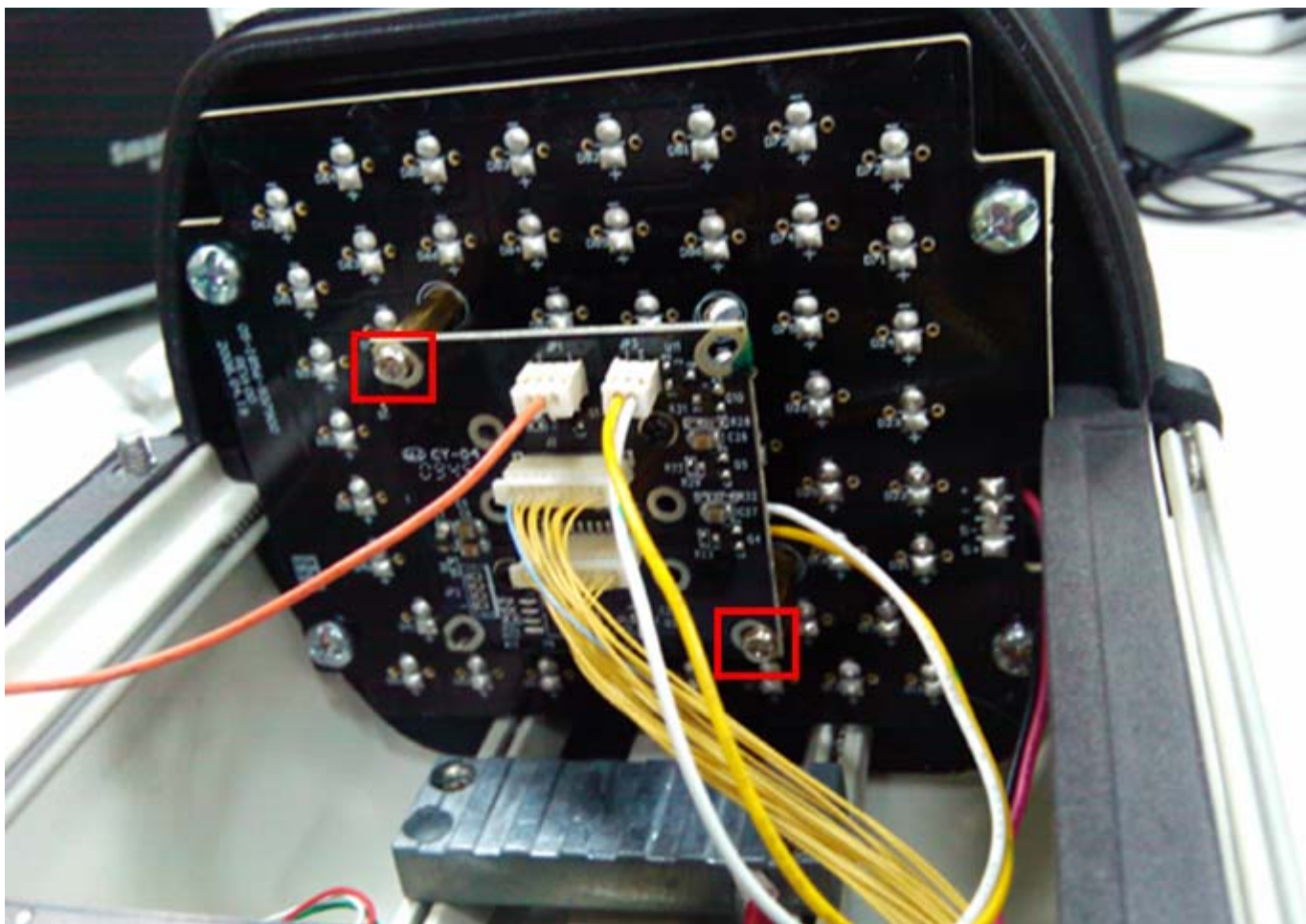
**Step2.** Use screw driver to loose the two screw on ICA-HM350 above plate.



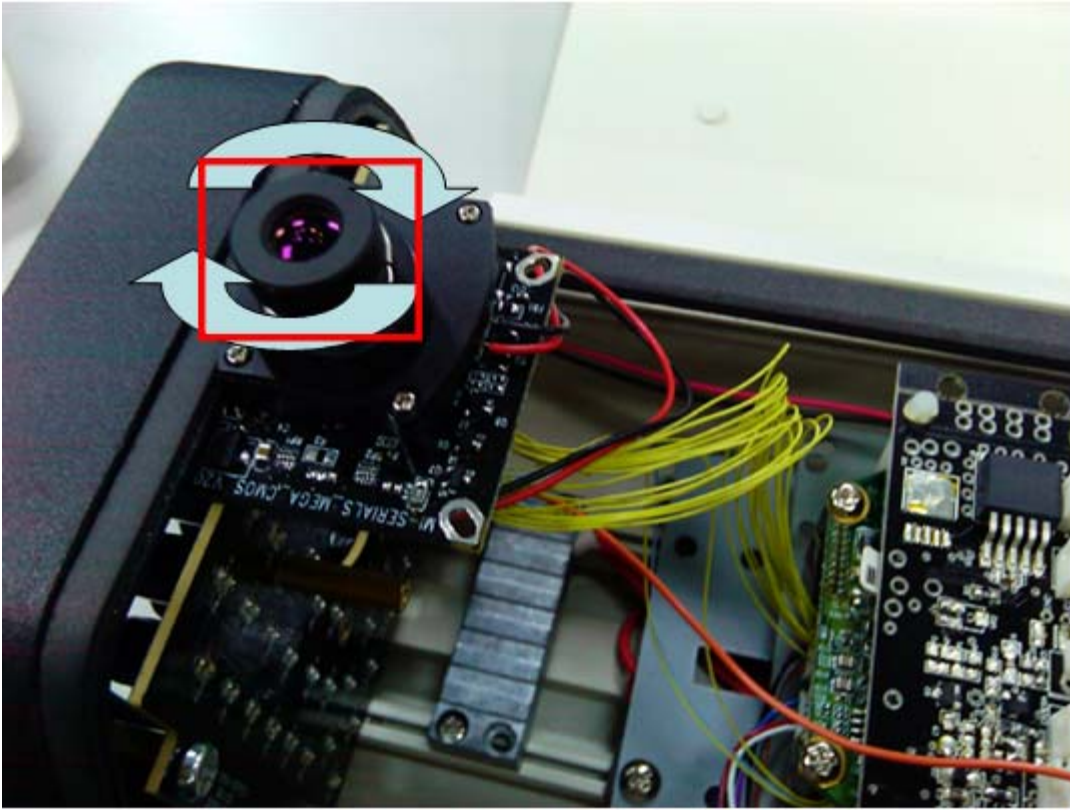
**Step3.** Turnover ICA-HM350, and you will see the two screw, use screw driver to loose the two screw on ICA-HM350 plate.



**Step4.** Open the box, you will see the two screw at front of ICA-HM350, and use screw driver to loose the two screw.



**Step5.** Take of the lens, and set the focus by turning the lens to the left or right direction.



**Step6.** After adjust your focus, use screw driver to lock your lens, and follow before steps to restore your ICA-HM350.